



# MOTOMCO MOLE KILLER

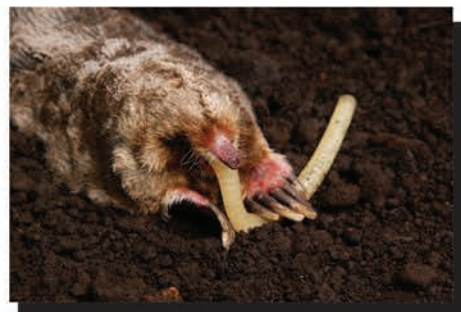
## #1 CHOICE FOR MOLE CONTROL

- ▶ Scientifically proven to kill moles
- ▶ Only mole bait registered with the EPA using proven laboratory and field testing with live moles
- ▶ Utilizes the active ingredient Bromethalin, an acute non-anticoagulant
- ▶ Mimics a mole's natural food source: earthworms and grubs
- ▶ Moles can consume a lethal dose in a single feeding, but it may take 2 or more days from the time of consumption to die.
- ▶ Worm product contains 12 placements of 1 worm each
- ▶ Grub product contains 4 placements (2 grubs each)

**For optimum product exposure and sell through, utilize the custom gravity feed display.**

- ▶ Ships pre-loaded and ready to display with 10 x 12pk boxes of 34310 Mole Killer Worms
- ▶ Saves valuable floor space. Can be conveniently hung on sides of endcaps, main runways or near checkout.

ITEM CODE	PRODUCT DESCRIPTION	UPC	CASE QTY	PALLET QTY
34310	Motomco Mole Killer Worms 12 pk	0 4874534310 5	4	480
34360	Motomco Mole Killer Grubs 4 pk	0 4874534360 0	4	792
39967	Motomco Mole Killer Gravity Feed Display 10 x 12pk	0 4874534310 5	10	400



# MOTOMCO

THE WORLD LEADER IN RODENT CONTROL TECHNOLOGY®  
3699 Kinsman Blvd., Madison, WI 53704 U.S.A. • (800) 418-9242  
[www.motomco.com](http://www.motomco.com)



# MOTOMCO MOLE TRAP

**HEAVY-DUTY REUSABLE  
TRAP KILLS MOLES**



*Professional grade quality and innovative design make the Motomco Mole Trap your best choice for capturing and killing moles. Made from heavy duty, glass filled nylon, the durable construction won't rust and can be used again and again. Motomco Mole Trap is safe and easy to use and is easily set with a foot pedal that springs back once a mole has been caught. Simply place the curved jaws over the top of an active runway, step down on the foot pedal and moles will trigger the trap.*

- Innovative and effective design
- Dual springs for maximum power and curved jaws that scoop moles for improved capture
- Made from heavy duty, durable nylon - no sharp spikes and won't rust over time
- Can be used again and again
- Easy to use, with easy to set foot pedal that will spring back when trap is triggered
- Use on its own or part of an integrated Mole Control program with Motomco Mole Killer



ITEM CODE	PRODUCT DESCRIPTION	UPC	CASE QTY	PALLET QTY
34160	Motomco Mole Trap	0 4874534160 6	4	168

**MOTOMCO**

THE WORLD LEADER IN RODENT CONTROL TECHNOLOGY®

3699 Kinsman Blvd., Madison, WI 53704 U.S.A. • (800) 418-9242

[www.motomco.com](http://www.motomco.com)