

MOTOMCO  
**RODENT CONTROL SYSTEM**

**No biosecurity initiative is complete without the implementation of a comprehensive RODENT CONTROL PROGRAM.**

**INSPECTION & IDENTIFICATION**

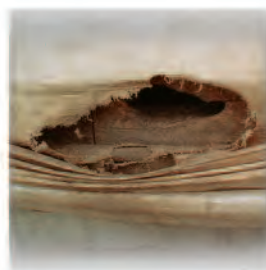
Rodent signs help determine the size of the infestation and where the rodents are traveling and feeding



DROPPINGS



BURROWS



GNAW MARKS

- 1. Mice:
  - a. 1/4 inch in width
  - b. Holes are small, clear cut
- 2. Rats:
  - a. 1/2 inch in width
  - b. Holes are big with rough torn edges



**RUB MARKS**

When dirt in the environment combines with oils in their skin, rub marks are left when rodents travel along walls.

**IDENTIFICATION**



	Norway Rats	Roof Rats	House Mice
Scientific Name:	Rattus Norvegicus	Rattus Rattus	Mus Musculus
Color:	Brownish Red	Dark Gray	Black, Dusty Gray
Weight:	10-17 oz.	8 oz.	3/4 oz.
Length: (including tail)	12-18 inches	13-17 inches	6-7 inches
Body:	Thick body, blunt nose	Thin body, pointed nose	Small head & body
Sexual Maturity:	2-3 months	2-3 months	1 month
Gestation Period:	23 days	22 days	19 days
No. of Young:	6-12 per litter	6-8 per litter	5-6 per litter
No. of Litters:	Avg. 4-7 per year	Avg. 4-6 per year	Avg. 8 per year
Diet:	Meats, fish, grains, almost anything	Fruits, vegetables, seeds, grains	Grains, cereals, meats, fish, etc.
Daily Food:	1 oz. food	1 oz. food	1/10 oz. food
Water Consumption:	1 oz. water	1 oz. water	1/20 oz. water
Length of Adult Life:	18 months	18 months	15-18 months
Feces:	Blunt ends	Pointed ends	Pointed ends
Nests:	Burrows, 100-150 ft. from food & water	Trees/Rooftops, 100-150 ft. from food & water	Corners, 10-30 ft. from food & water

**SANITATION & HARBORAGE**



Eliminate all spilled feed



Keep a 3-foot sterile zone around buildings mowed or sprayed



Remove debris from around buildings

**BAITING & STRATEGIES**

**Perimeter of the Property:**

- ▶ Place tamper resistant bait stations along the perimeter of the property
- ▶ Use BAIT CHUNX® as they can be secured inside bait stations on vertical or horizontal securing rods

**Exterior Baiting:**

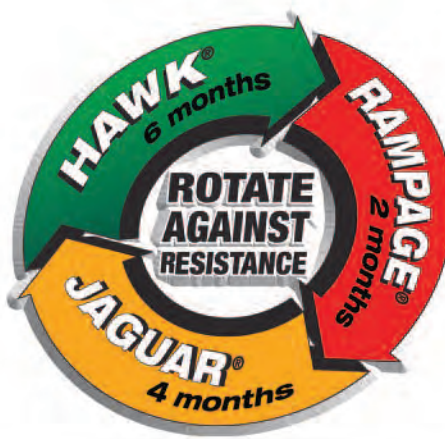
- ▶ Rodents tend to gravitate to warm air currents or where food odors emerge
- ▶ Tamper-resistant bait stations or traps should be placed every 30-50 ft depending on the severity of the infestation
- ▶ Place bait or traps around all entry doors
- ▶ Burrow baiting – place loose pellets deep into the burrows

**Interior Baiting:**

- ▶ Rodent device placement depends on the type of infestation you are dealing with:

**MICE:** Space placements at 8-12 foot intervals depending on the severity of the infestation

**RATS:** Space placements at 15-30 foot intervals depending on the severity of the infestation



**Bait rotation is vital to successful long term rodent control. Implement a program that utilizes multiple active ingredients, including at least one non -anticoagulant rodenticide.**

MOTOMCO  
**BIOSECURITY**



**RODENT CONTROL**

**A CRITICAL COMPONENT OF AN INTEGRATED BIOSECURITY PROGRAM**



THE WORLD LEADER IN RODENT CONTROL TECHNOLOGY®

**BIOSECURITY IS THE MANAGEMENT OF A PROGRAM THAT PREVENTS INFECTIOUS DISEASE AGENTS FROM ENTERING FARMS**



## COMPONENTS OF A BIOSECURITY PROGRAM

### TRAFFIC CONTROL

People and machinery can quickly transport pathogens over long distances. Controlling who and what comes into contact with animals reduces exposure.

### CLEANING & DISINFECTION

When people and machinery do come in contact with the animals - ensuring they are clean and disinfected will greatly reduce pathogen exposure.

### REDUCTION OF SUSCEPTIBLE HOSTS

Animals with lower immune systems need to be vaccinated. Pools of water (where pathogens can thrive) need to be eliminated. Anywhere diseases can grow and multiply need to be reduced or eliminated.

### PEST CONTROL

Both insects and rodents transmit diseases. Controlling pests is essential to prevent disease transmission.



## MOTOMCO RODENT CONTROL SYSTEM

**RODENT CONTROL IS AN INTEGRAL PART OF ANY BIOSECURITY PROGRAM**

### RODENTS ARE A BIOSECURITY RISK

- ▶ Rodents can be reservoirs for disease agents, which can live inside the rodents body and be excreted in their urine & feces
- ▶ Rodents are well adapted to living with, or in close proximity to, humans and farm animals. This co-existence increases the likelihood of transmission
- ▶ Rodents are prolific breeders, which can result in a large rodent population in a short period of time. If disease organisms are present within these populations, they can be widely and rapidly distributed to uninfected areas and animals

### DISEASES INCLUDE...

- ▶ Salmonellosis
- ▶ Cholera
- ▶ Leptospirosis
- ▶ Bordetellosis
- ▶ Hanta
- ▶ LCMV (Lymphocytic Choriomeningitis Virus)

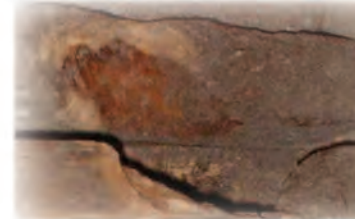
**Rodents also account for tens of millions of dollars in profit losses each year in poultry and swine production facilities through...**

### STRUCTURAL DAMAGE

Rodents have a constant desire to gnaw. They will gnaw on or through virtually any type of material... wood, metal, plastic, etc, causing a variety of damage throughout your operation.

- ▶ Rodents gain entry by creating openings into the facility
- ▶ Once inside they wreak havoc on divider curtains, plumbing systems and wiring...

In fact, it is estimated that 1/5 of the unexplained fires are caused by rodents gnawing wiring



### FEED LOSSES

From a global perspective, as much as 20% of the world's food supply is contaminated by rodents each year.

For swine and poultry operations, a rodent's financial impact is felt in 2 ways...

- ▶ Direct consumption of stored feedstuffs
- ▶ Contamination or spoilage of feed rendering it unusable



# MOTOMCO

THE WORLD LEADER IN RODENT CONTROL TECHNOLOGY®



### THE WORLD LEADER

- ▶ The Largest Manufacturer of Rodenticides in the World
- ▶ Hold more patents than any other rodent control company in the world
- ▶ Hold more bait registrations of any rodent control company in the US
- ▶ Offer a complete line of rodent control products - pelleted and block bait, adhesive traps, mechanical traps and tamper-resistant bait stations



### SUPERIOR TECHNOLOGY

- ▶ Experts in rodenticide formulations
- ▶ Continuous product innovation
- ▶ Unmatched performance for more than 40 years



### SUPERIOR PRODUCT

- ▶ Motomco baits consistently out feed and kill more rodents than competitive products
- ▶ Comprehensive Rodent Biosecurity Program - including Motomco's Bait Rotation Strategy



### EXPERIENCED TECHNICAL REPRESENTATIVES

- ▶ Highly trained technical field reps focused only on Producer/Integrator market

## MOTOMCO

THE WORLD LEADER IN RODENT CONTROL TECHNOLOGY®  
3699 Kinsman Blvd., Madison, WI 53704 U.S.A. • (800) 418-9242

www.motomco.com